

## Report

**Subject:** Inspection of Woodridge Village, Figure Four Partners, LTD (Perry Homes Development)

### Observations:

- Construction site is moderately wet from recent rain
- Gathering cleared trees, brush and debris continues
- Chipping of brush and trees has begun
- Berm between Detention Pond #1 and #2 is under construction
- No dust is detected on site
- Plans for detention ponds for future phases have been completed and plans have been returned from Montgomery County with few comments
- Construction on these detention ponds is anticipated to begin in four (4) weeks
- South portion of construction site has been seeded and grass seeds are now germinating and thriving
- Some portions of the north construction site have been seeded and grass seeds have germinated
- Some portions of the between the north construction area and the south construction area have not been stabilized
- Water in Taylor Gulley is turbid
- Construction entrance on Woodland Hills Drive requires maintenance
- Storm sewer inlets require maintenance
- Construction and silt fencing at Woodland Hills Drive median is well maintained
- Creek Manor Drive has been stabilized using curlex erosion control blanket and grass is well established
- End of Village Springs Drive, slope has been stabilized using curlex erosion control blanket and grass is well established
- Light sediment in gutters on Village Springs and Creek Manor Drive
- Harris County Flood Control has seeded Taylor Gulley levee and side slopes and grass is well established
- Silt fencing across Taylor Gulley is in acceptable condition
- Hay bales upstream on the outfall structure are in place and secure
- Hay bales downstream on the outfall structure remain in place and appear to be effective
- New back-slope drain has been installed at Detention Pond #1
- Construction activity at Detention Pond #1 and Montgomery County Ditch appears complete

**Actions to be addressed:**

- Continue to maintain outfall structure and silt fencing
- Dust control measures on clear-cut area has been initiated except for the area around the piles of trees, brush and debris
- Complete stabilization of north portion of construction site when chipping of trees, brush and debris is complete

**Actions discussed with Figure Four Partners, LTD (Perry Homes):**

- Figure Four Partners, LTD has swept Village Springs Drive, Creek Manor Drive and additional streets in the Elm Grove Subdivision
- Figure Four Partners, LTD (Perry Homes) has removed debris and stabilized disturbed areas at the end of Village Springs Drive
- Figure Four Partners, LTD (Perry Homes) has removed sediment and stabilized disturbed areas at the end of Creek Manor Drive
- Figure Four Partners, LTD (Perry Homes) has added hay bales upstream and downstream of outfall structure at Taylor Gulley as a Best Management Practice (BMP's) to reduce sediment migration
- Figure Four Partners, LTD (Perry Homes) has maintained hay bales on outfall structure
- Figure Four Partners, LTD (Perry Homes) has added a second silt fence across Taylor Gulley
- Figure Four Partners, LTD (Perry Homes) has maintained the existing silt fence across Taylor Gulley
- Figure Four Partners, LTD (Perry Homes) has stabilized clear-cut area
- Figure Four Partners, LTD (Perry Homes) continues to shred the trees and brush
- Figure Four Partners, LTD (Perry Homes) continues to inspect and maintain construction site entrance and storm sewer Inlets on Woodland Hills Drive
- Construction on detention ponds for future phases is anticipated to begin in four (4) weeks
- Locked gates are to be added at construction site entrances to restrict public access

**Schedule for actions:**

- Construction on detention ponds for future phases is anticipated to begin in four (4) weeks
- Figure Four Partners, LTD (Perry Homes) has removed debris and stabilized disturbed area at the end of Village Springs Drive; **completed**
- Figure Four Partners, LTD (Perry Homes) has removed sediment and stabilized disturbed area at the end of Creek Manor Drive; **completed**

2/3/2020

- Grass seeds in the Curlex Blanket have germinated and is thriving; **installation is complete**
- Figure Four Partners, LTD (Perry Homes) has swept Village Springs Drive, Creek Manor Drive and additional streets in the Elm Grove Subdivision; **completed**
- Figure Four Partners, LTD (Perry Homes) has maintained hay bales at outfall structure at Taylor Gulley as a Best Management Practices (BMP's) to reduce sediment migration; **complete**
- Remove sediment from concrete approach and outfall structure at Taylor Gulley; **completed**
- South portion of construction site has been seeded and the grass seeds have germinated; **monitor**
- North portion of construction site has been seeded and the grass seeds have germinated; **monitor**
- Stabilize clear-cut area to reduce dust; **in progress**
- Maintain Silt fencing across Taylor Gulley and install additional layers of silt fencing; **complete**

**Photos:**

2/3/2020



Signage on Woodland Hills Drive



New Street to be Connected to Woodland Hills Drive



2/3/2020



Median Protection on Woodland Hills Drive



View of Construction Site Entrance on Woodland Hills Drive  
Note: Moderate to heavy tracking



2/3/2020



Inlet Protection on Woodland Hills Drive  
Note: Requires maintenance



View of South Construction Area with Grass Stabilization



2/3/2020



View of Detention Pond #2 Looking East  
Note: Pond requires stabilization



View of South Construction Area with Grass Stabilization



2/3/2020



View of Hydro-Mulch Stabilized Ditch between Detention Pond #1 and #2



View of Hydro-Mulch Stabilized Ditch between Detention Pond #1 and #2



2/3/2020



Vegetation at End of Village Springs Drive  
Note: Berm under construction in background



Close View of New Berm Under Construction Between Detention Pond #1 and #2



2/3/2020



View of Vegetation at Creek Manor Drive



View of Montgomery County Flood Control Ditch Outfall to Taylor Gulley



2/3/2020



View of Outfall of Detention Pond #1 to Taylor Gulley  
Note: Silt fences are well maintained



View of Outfall of Detention Pond #1 to Taylor Gulley  
Note: Hay Bales are well maintained



2/3/2020



View of Upstream Outfall Structure from Detention Pond #1 to Taylor Gulley  
Note: Hay bales are in place and well maintained



Close View of Hay Bales



2/3/2020



View of Upstream Outfall Structure from Detention Pond #1 to Taylor Gulley



View of New Berm Between Detention Pond #1 and #2 Under Construction



2/3/2020



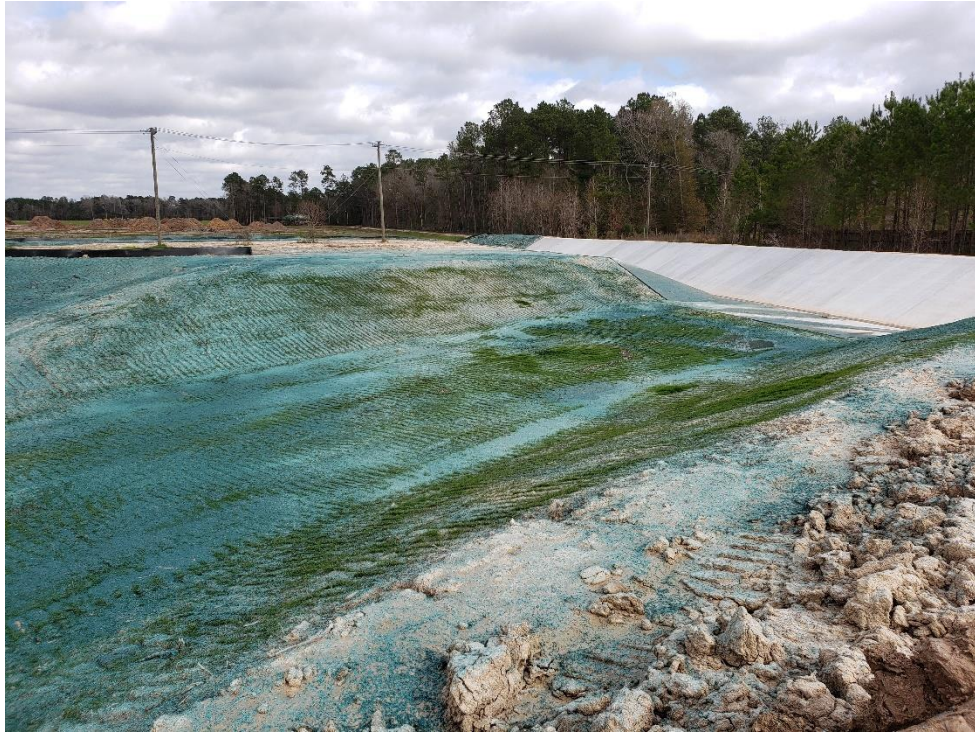
Detention Pond #1 Side Slopes are Dressed and Stabilized with Hydro-Mulch



Detention Pond #1 Side Slopes are Dressed and Stabilized with Hydro-Mulch



2/3/2020



View of Overflow from Montgomery County Flood Control Ditch to Detention Pond #1  
Note: This area has been re-stabilized with Hydro-Mulch



View of Overflow from Montgomery County Flood Control Ditch to Detention Pond #1  
Note: This area has been re-stabilized with Hydro-Mulch



2/3/2020



View of Overflow from Montgomery County Flood Control Ditch to Detention Pond #1  
Note: This area has been re-stabilized with Hydro-Mulch



View of Montgomery County Flood Control Ditch with Concrete Slopes



2/3/2020



Upstream Outfall of Montgomery County Flood Control Ditch to Taylor Gulley  
Note: Debris retained by rock gabions



View of Taylor Gulley Looking South  
Note: Vegetation is well established



2/3/2020



View of Fair Grove Drive



View of Driveway to COH Well #6  
Note: Ponding from recent rain



2/3/2020



View of Detention Pond #1 Looking Northeast



View of Construction Entrance on Webb Road  
Note: Light to moderate tracking



2/3/2020



View of Northern Clear-cut Area Looking South  
Note: Area is partially stabilized



View of Northern Clear-cut Area Looking Southeast  
Note: All trees and brush have not been chipped



2/3/2020



View of Northern Clear-cut Area Looking East  
Note: All trees and brush have not been chipped