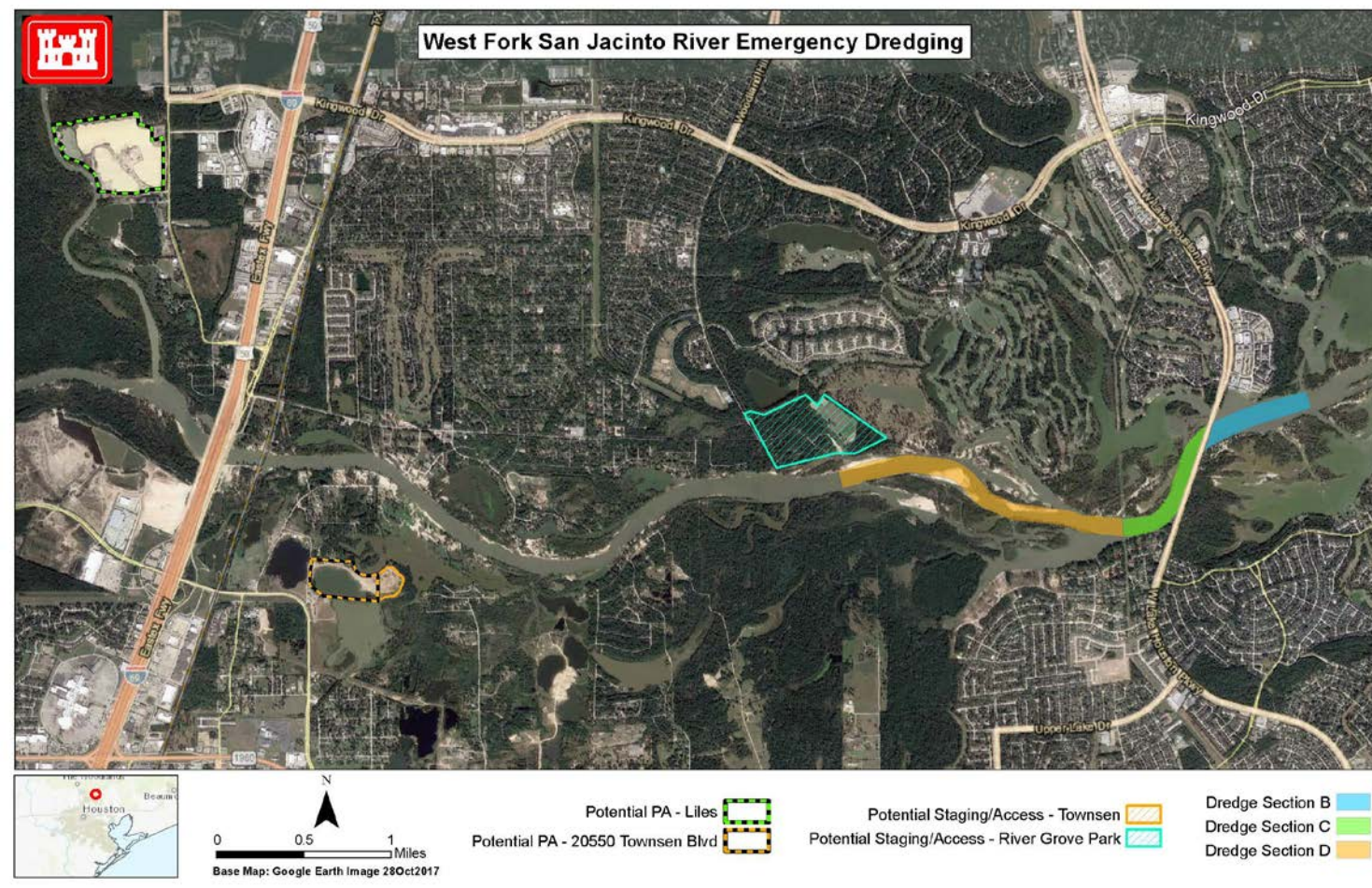


# West Fork of the San Jacinto River Emergency Dredging

**Current Status:** USACE Galveston District as tasked by FEMA, awarded a contract on Friday 6 July 2018 to Great Lakes Dredge and Dock, in the amount of \$69,814,060 to remove sediment and debris resulting from Hurricane Harvey from the West Fork of the San Jacinto River.



Solicitation Phase		
Activity/Milestones	Scheduled	Current
Advertise	18May18	18May18 A
Bid Opening	28May18	22Jun18 A
Contract Award	11Jun18	6Jul18 (A)
NTP Acknowledge	15Jun18	18 Jul18 (A)

Contract Milestones			
Activity/Milestones	Start	Finish	Solicitation Details
Set-up Staging Area	19Jul18 (A)	28Jul18	<b>Bid: \$69,814,060</b> <b>S&amp;A: \$400K</b> <b>Cont: \$3,490,703</b> <b>Total: \$73,704,763</b>
Assemble & Install Pipelines	28Jul18	6Oct18	
Set up Dredges (2)	13Aug18	16Oct18	
General Debris Removal & Disposal	20Aug18	8Apr19	
Dredging	1Sep18	14Apr19	
Demobilize & Cleanup	14Apr19	03May19	

**Update:** The Contract to remove sediment and debris was awarded on Friday 6 July 2018 to Great Lakes Dredge and Dock in the amount of \$69,814,060. The Pre-Construction meeting was held on 18 July 2018, where the Notice to Proceed (NTP) was issued and acknowledged; starting the contract duration of 270 days. Currently Great Lakes and their sub contractor has started mobilizing.

**Issues:** None at this time

**Authorization:** FEMA Mission Assignment SWD-30

**History:** Excessive debris from Hurricane Harvey is exacerbating and impeding the free flow of water down this portion of the West Fork of the San Jacinto River. Heavy rainfall received over this water shed as well as down stream flows into this portion of the river has created a situation that poses threats to life safety, critical infrastructure, as well as potential loss of life. More than 16,000 homes and 3,300 business near Lake Houston were damaged by Harvey-related flooding.

**Description:** The work consists of the removal of shoal material within the West Fork of the San Jacinto river, from I69 to the confluence of Lake Houston. Dredging limits were determined by the H&H modeling.



**BUILDING STRONG®**