

Houston Bikeways Update

Transportation Planning Team

May 5, 2022



PLANNING &
DEVELOPMENT
DEPARTMENT

Vision and Goals

By 2027, the City of Houston will be a safer, more accessible, Gold-Level Bike-Friendly City

Improve Safety

To provide a safer bicycle network for people of all ages and abilities through improved facilities, education, and enforcement

Increase Access

To create a highly accessible, citywide network of comfortable bike facilities that connects neighborhoods to transit, jobs, and activity centers, including schools, universities, parks and libraries

Increase Ridership

To exceed average ridership levels in peer cities by implementing policies and programs that enable more people to ride bicycles and encourage healthy, active transportation choices

Develop and Maintain Facilities

To develop and sustain a high-quality bicycle network, including both bikeways and end-of-trip facilities



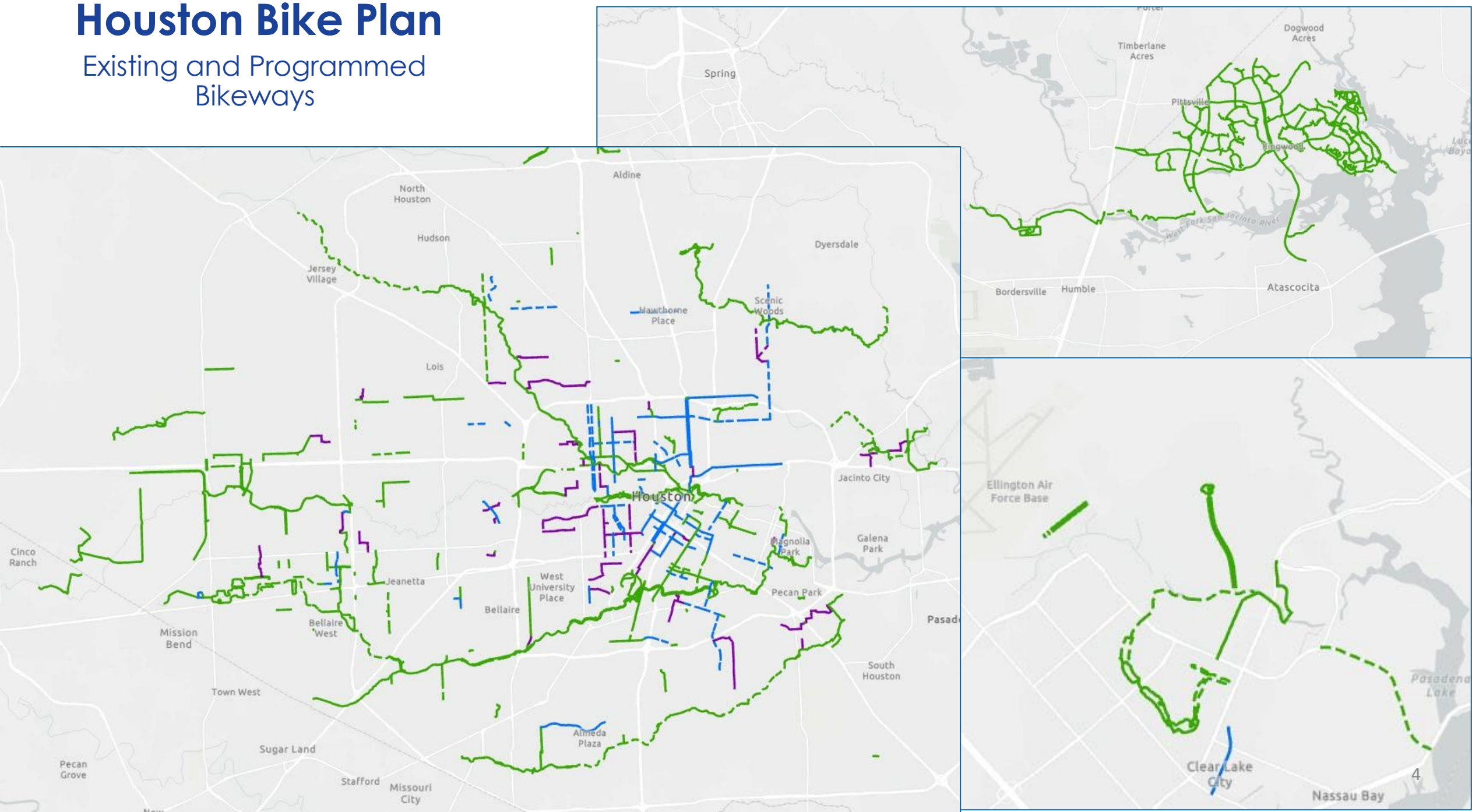
Bicycle Advisory Committee

Name	Organization	Inf	Edu
Tracy Alexander	AARP Foundation		
Leah Chambers	Outside Voices	X	VC
Adam J. Williams	Community Advocate		
Carl B. Salazar	Greater Houston Partnership		
Kristine Anthony-Miller	Houston Police Department		X
Beth Martin	Community Advocate	X	X
Tom Compson (Chair)	Community Advocate	X	X
Lisa Graiff	Houston Parks Board		X
Trevor Reichman	Community Advocate		
Jessica Wiggins	Traffic Engineers Inc	X	C

Name	Organization	Inf	Edu
Yuhayna H. Mahmud	METRO	X	
Nick Hellyar	BikeHouston	X	X
Judith Villarreal	Ghost Bike/East End Bike Ride	X	X
Amar Mohite	Harris County Commissioner Pct. 1	X	
Mike VanDusen	Super Neighborhood Alliance	X	
Ana Ramirez Huerta	TxDOT-Houston District	X	
Nikki Knight	Greater Southeast Management District		
Alejandro Perez (Vice Chair)	Neighborhood Rep (North Houston)	C	X
Robin Holzer	Neighborhood Rep (Neartown/Montrose)	X	X
Veon McReynolds	Neighborhood Rep (South Houston/MacGregor)		

Houston Bike Plan

Existing and Programmed Bikeways



Houston Bike Plan Implementation

	Total Miles Built as of December 31, 2020	Miles Built in 2021	Total Miles Built as of December 31, 2021	Miles Programmed 2022
Dedicated On-Street	25	4	29	48
Shared On-Street	32	1	33	10
Off-Street	287	37	324	67
Total	344	42	386	125

Bikeways Partners

- City of Houston
- Harris County Precincts 1 and 2
- Houston Parks Board
- METRO
- Management Districts & TIRZ's
- TXDOT/H-GAC

Total Mileage of Other Cities

- Philadelphia, PA: 280
- San Antonio: 315
- Austin: 215
- Fort Worth: 164

Houston Bike Plan: Ride to 500

Agencies with Bikeways Under Construction

- City of Houston: **2.5 mi**
 - Hillcroft Ave, Lawndale St
- Harris County Precinct 1: **4.7 mi**
 - Cullen Blvd, W Mount Houston/W Montgomery/TC Jester, Hawthorne St
- Houston Parks Board: **24 mi**
 - Buffalo, Hunting, Sims, Brays, Halls, San Jacinto, White Oak Bayous
- METRO: **0.6 mi**
 - Cavalcade St
- Management Districts & TIRZ's **6.7 mi**
 - Bagby St, Walnut Bend Ln, Shepherd/Durham Dr, W Dallas St, Waugh/Commonwealth

Houston Bike Plan: Ride to 500

Agency Bikeways with at Least 90% Design Completion

- City of Houston: **6.7 mi**
 - N Main St, 11th St, Patterson St, Shepherd/Durham Dr, Lockwood Dr, Parker Rd
- Harris County Precinct 1: **3.6 mi**
 - Calhoun Rd, Almeda Rd, El Rio/El Camino St, Fondren Rd, Blodgett/Tierwester St
- Houston Parks Board: **14.7 mi**
 - Sims, Brays, Halls Bayous; Spring Branch Trail, Scott Street Greenway
- METRO: **1.8 mi**
 - McGowen St

Bikeways Prioritization

Goal: Identify the next phase of Bike Plan Implementation

- 1,800 miles of bikeways: where to start next?
- Pair quantitative data with BAC input to create methodology and guide inputs
- Emphasize equitable outcomes
- Focus on immediate new construction and short-term retrofits

Bikeways Prioritization

1. Staff identified “Factors” and proposed weights based on previous prioritization iterations
 - Safety
 - Demand
 - Connectivity
 - Equity
2. BAC feedback to confirm or adjust weights
3. Staff assigned data (variables) to each factor to provide a quantifiable measurement of each
4. Scores were generated from raw scores being normalized and weighed

City of Houston Bikeways

Washington – Center Corridor

- Priority 1
- Priority 2, 3, 4
- Existing Bikeways
- - - Programmed Bikeways

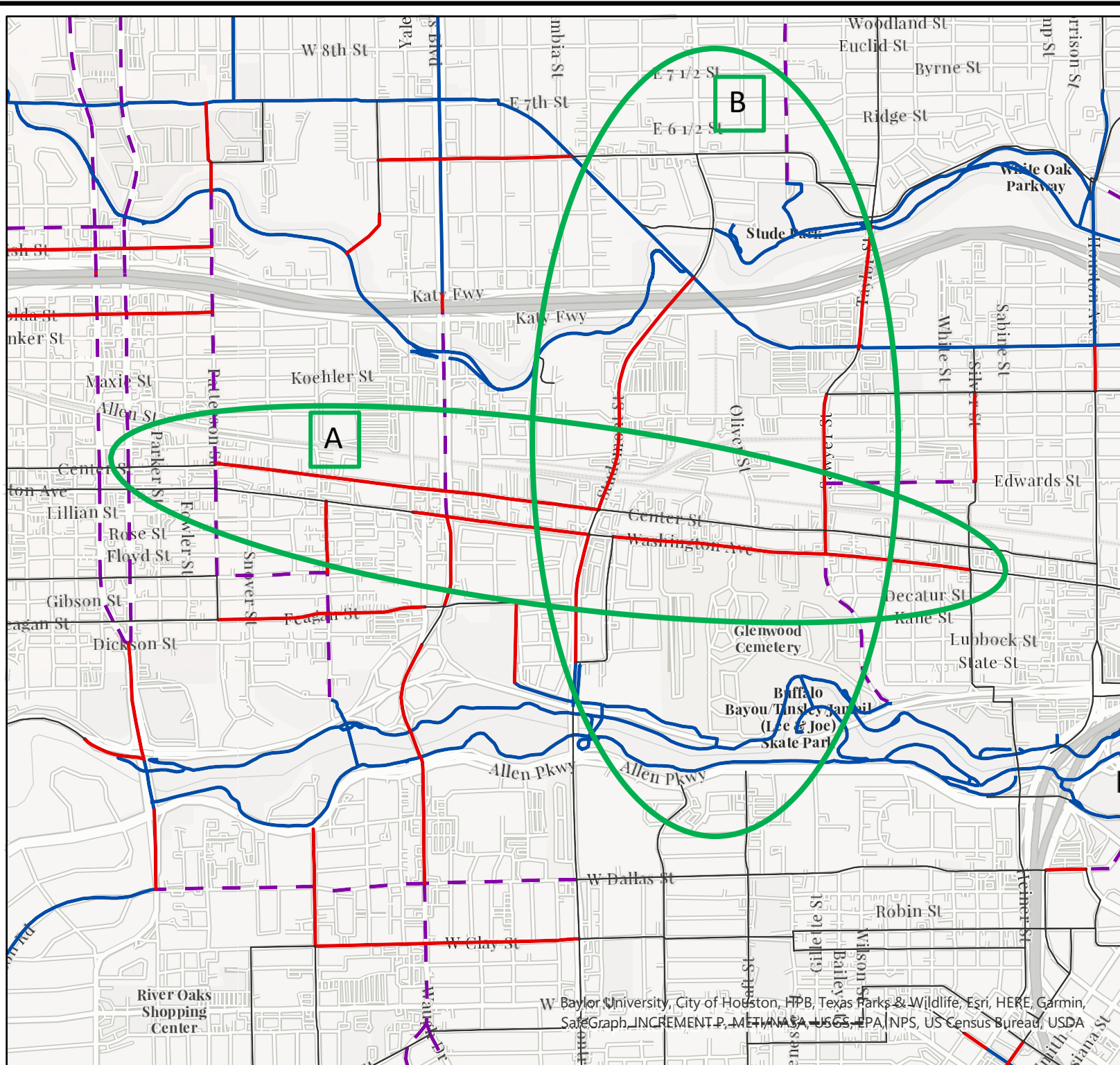
A: Washington-Center

B: Create a N-S Connection
-Studemont/Studewood
-Sawyer-Silver

0 0.07 0.15 0.3
Miles

Version Date: 7/21/2021

This map is made available for reference purposes only and should not be substituted for a survey product. The City of Houston will not accept liability of any kind in conjunction with its use.



W Baylor University, City of Houston, HPB, Texas Parks & Wildlife, Esri, HERE, Garmin, SafeGraph, INCREMENT P, METI/NASA, USGS, EPA, NPS, US Census Bureau, USDA

City of Houston Bikeways

Irvington-Cochran Corridor

- Priority 1
- Priority 2, 3, 4
- Existing Bikeways
- - - Programmed Bikeways

A: Irvington-Cochran

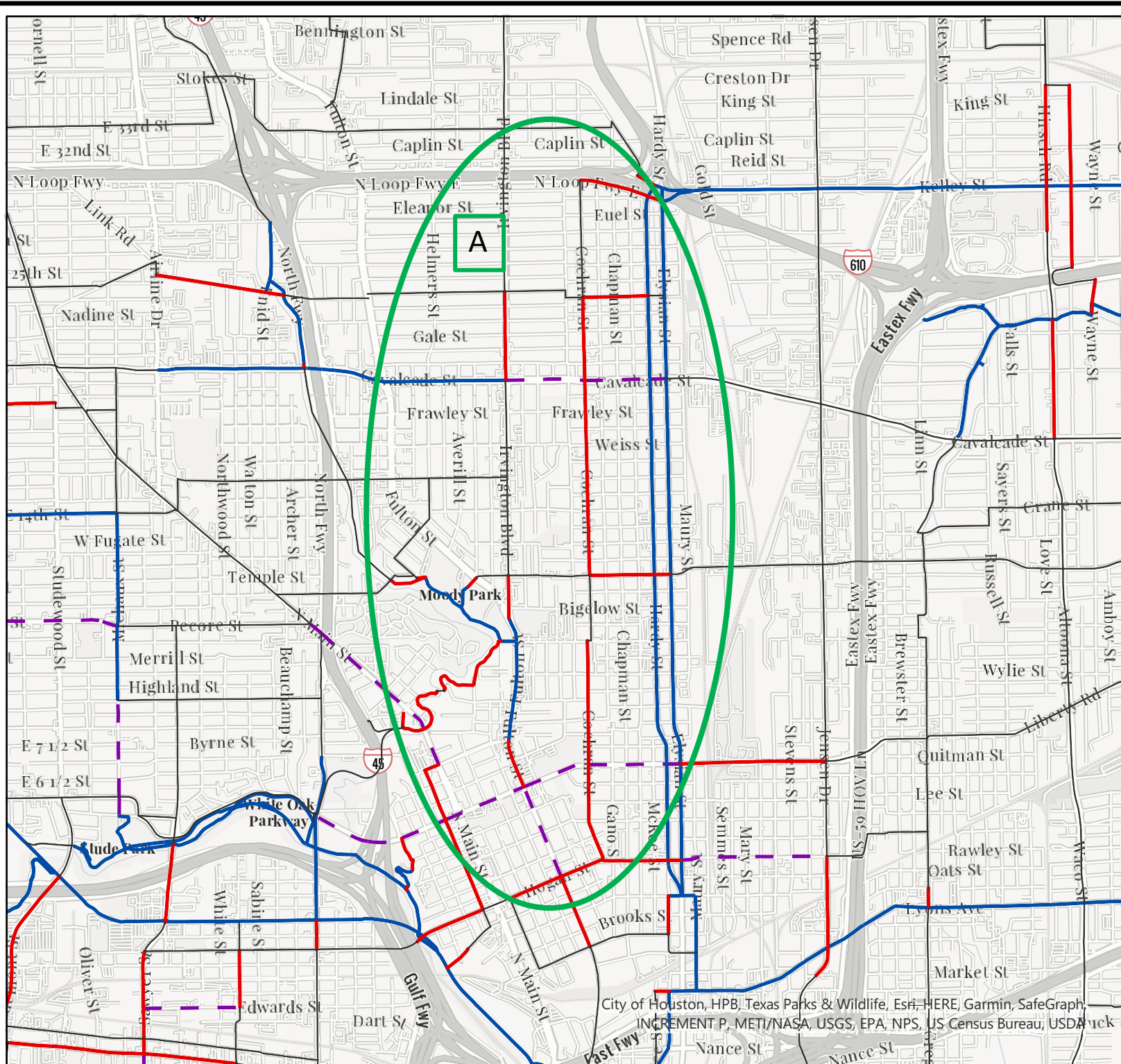
0 0.13 0.25 0.5 Miles

Version Date: 7/21/2021

This map is made available for reference purposes only and should not be substituted for a survey product. The City of Houston will not accept liability of any kind in conjunction with its use.



**PLANNING &
DEVELOPMENT
DEPARTMENT**



City of Houston, HPB, Texas Parks & Wildlife, Esri, HERE, Garmin, SafeGraph, INCREMENT P, METI/NASA, USGS, EPA, NPS, US Census Bureau, USDA, etc.

City of Houston Bikeways

Gulfton

- Priority 1
- Priority 2, 3, 4
- Existing Bikeways
- - - Programmed Bikeways

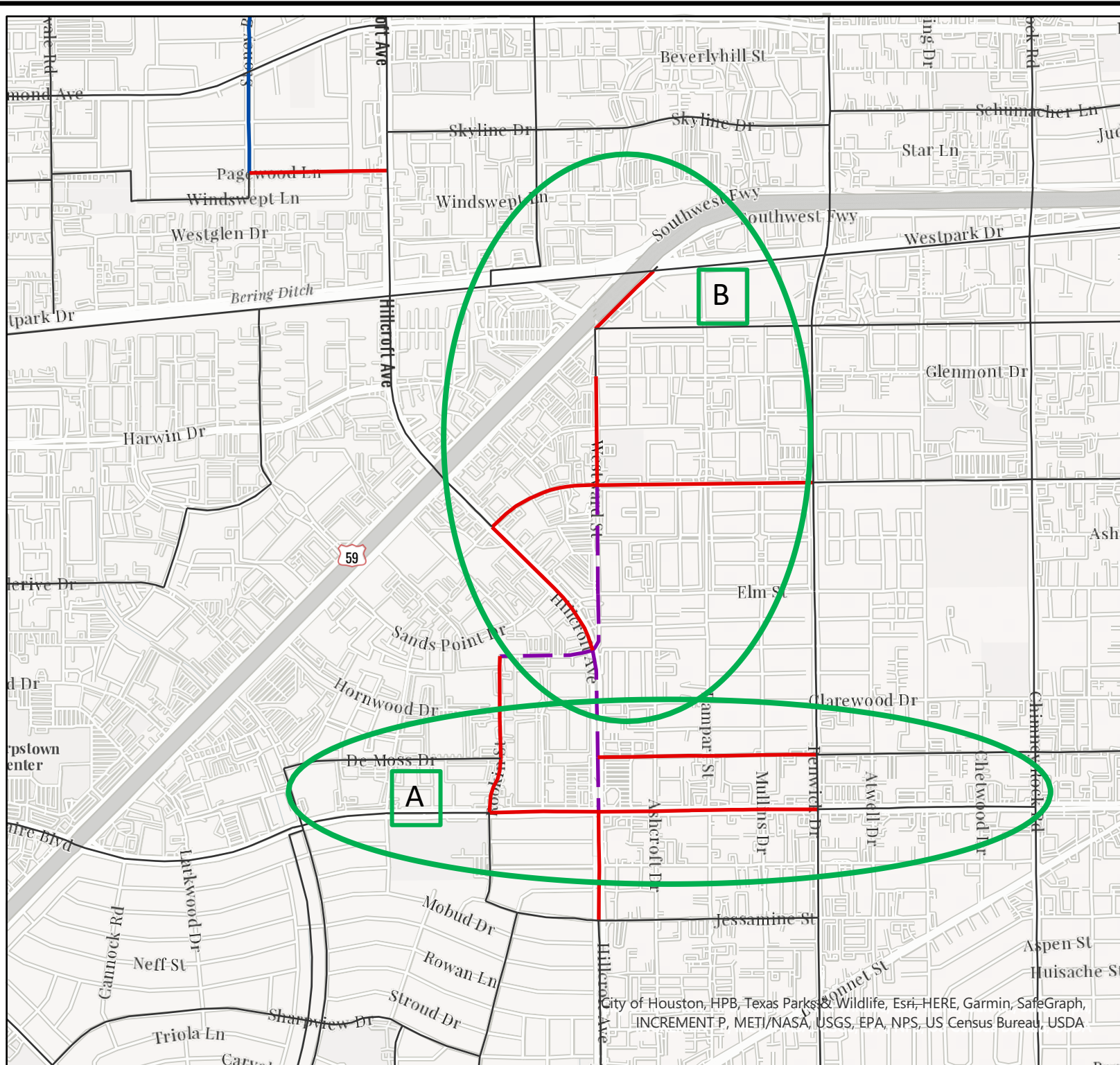
A: Bellaire-Dashwood

B: Hillcroft Park&Ride
Connection

0 0.07 0.15 0.3
Miles

Version Date: 7/21/2021

This map is made available for reference purposes only and should not be substituted for a survey product. The City of Houston will not accept liability of any kind in conjunction with its use.



City of Houston, HPB, Texas Parks & Wildlife, Esri, HERE, Garmin, SafeGraph, INCREMENT P, METI/NASA, USGS, EPA, NPS, US Census Bureau, USDA

Bikeways Maintenance

- **Problem Statement: Once we build bike lanes, how do we maintain them to be rideable?**
- BAC, citizens reported several high-comfort, protected bike lanes were unrideable due to debris, silt in the lanes
- Staff and the BAC explored existing issues with sweeping bike lanes and national best practices.
- Findings and recommendations were published in a report in 2021.
 - Ensure all bike lanes without protection and protected bike lanes with at least 10 traversable width are included in the existing maintenance plan
 - Inventory narrow (<10 ft traversable width) bike lanes and identify necessary resources needed (equipment, manning, funding) needed to sweep them.

Bikeways Maintenance

Potential Narrow Sweepers:

MacDonald Johnson CN201 (Used by San Francisco)

Min Operating Width: 52 in
Max Operating Width: 132 in
Storage Capacity: 1.96 cubic yd



Madvac LS100 (Used by Montreal)

Min Operating Width: 48 in
Max Operating Width: 89 in
Storage Capacity: 1.15 cubic yd



Tennant Green Machines 636

Min Operating Width: 47 in
Max Operating Width: 80 in
Storage Capacity: 1.3 cubic yd



Upcoming Events

- 5/7: [Third Ward on Tap \(Houston Parks Board\)](#)
- 5/19: [Mayor's State of Mobility Address](#)
- 5/19-5/21: [Houston Bike Summit](#)
- 5/20: [Bike to Work Day \(City of Houston\)](#)
- 5/21: [Houston Art Bike Festival \(Houston Parks Board\)](#)
- 5/23-5/24: [Texas Vision Zero Summit](#)
- 5/31: Destination Trail Open House (Harris County / HCTRA)
- 6/12: Griggs Rd Pop-Up Bike Lane



Thank You



PLANNING &
DEVELOPMENT
DEPARTMENT

832-393-6600 | www.houston.tx.gov/planning