

# The Galveston Bay Park Plan





# SSPEED Center

Severe Storm Prediction, Education, & Evacuation from Disasters



# RICE



# TEXAS

The University of Texas at Austin



walter  
p moore

# ROGERSPARTNERS



# NEWS RELEASE

---

**FOR IMMEDIATE RELEASE**

August 23, 2019

USACE Contact: Mary Markos, 214-460-1772

GLO Contact: Karina Erickson, 737-210-9347

SSPEED Contact: Jim Blackburn, 713-501-9007

**Galveston Bay flood risk reduction studies deemed compatible by officials**

## **USACE COMPATIBLE**

**Emphasize Unique Aspects**

**Federal project vs. Build under Federal permits**

**Federal and state funding v. Private and Local funding**

# Elements of the Galveston Bay Park Plan

- 1** Houston-Galveston industrial complex & West-side Protection to 25 Feet
- 2** Texas City Levee Raised to 25 Feet
- 3** Backside Levee around Galveston (USACE)
- 4** Double Dune Shoreline Protection (USACE)
- 5** Houston Ship Channel Gate (USACE)







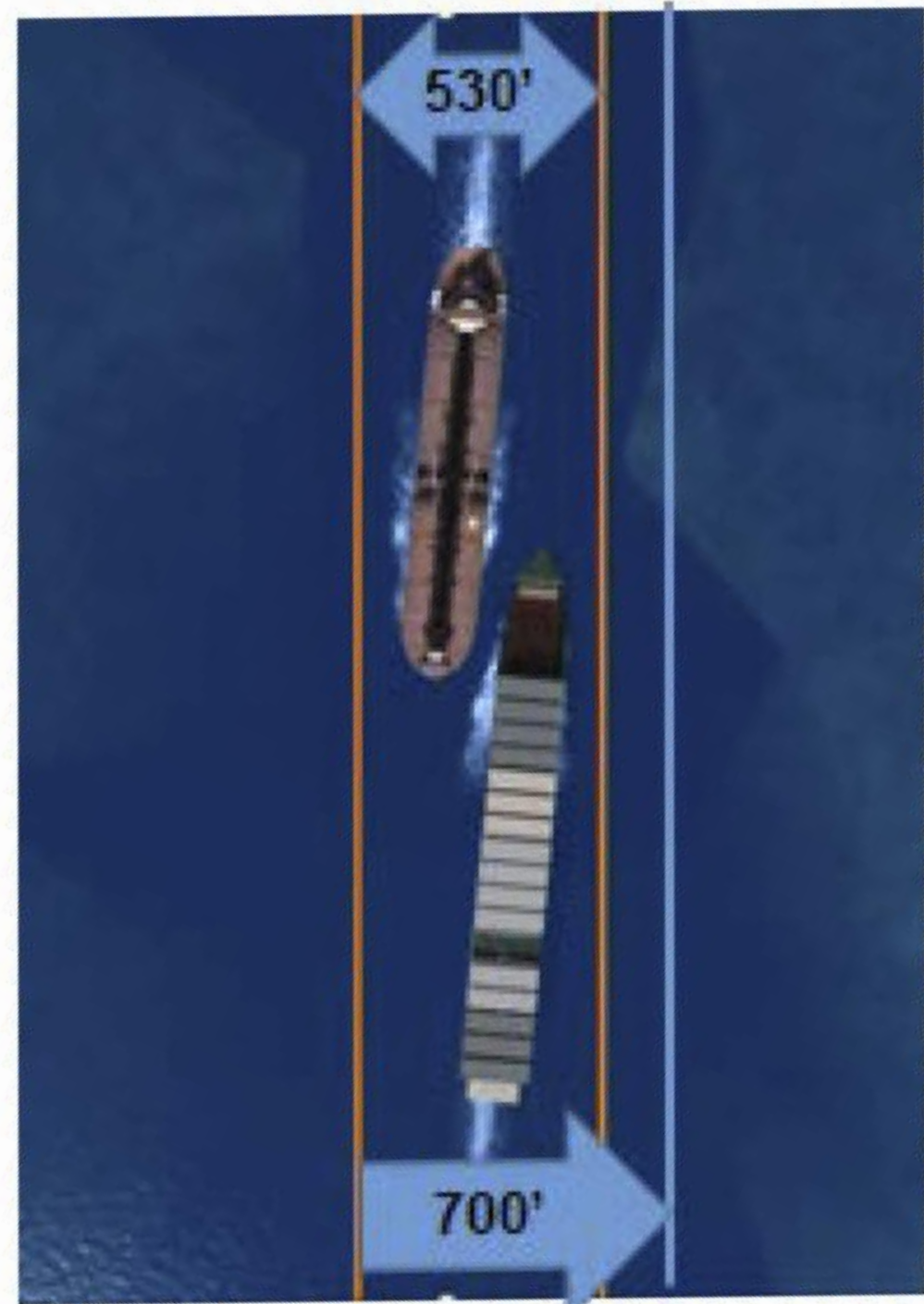


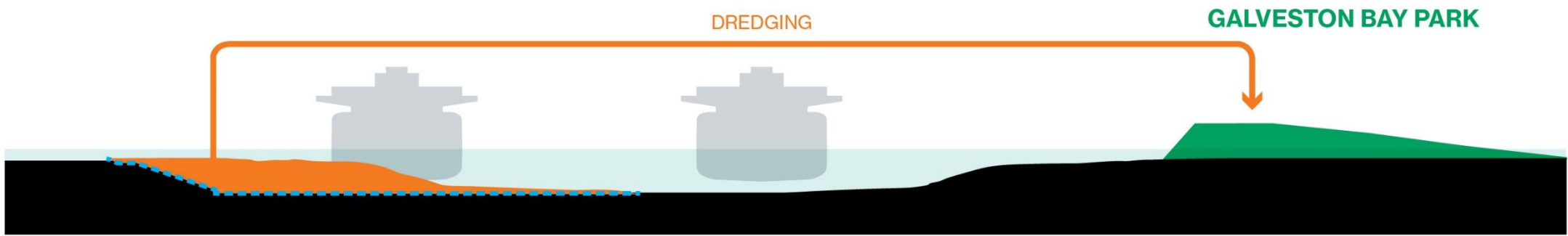
U.S. Army Corps  
of Engineers

Galveston District  
Southwestern Division

## Houston Ship Channel Expansion Channel Improvement Project, Harris, Chambers, and Galveston Counties, Texas

Draft Integrated Feasibility Report –  
Environmental Impact Statement



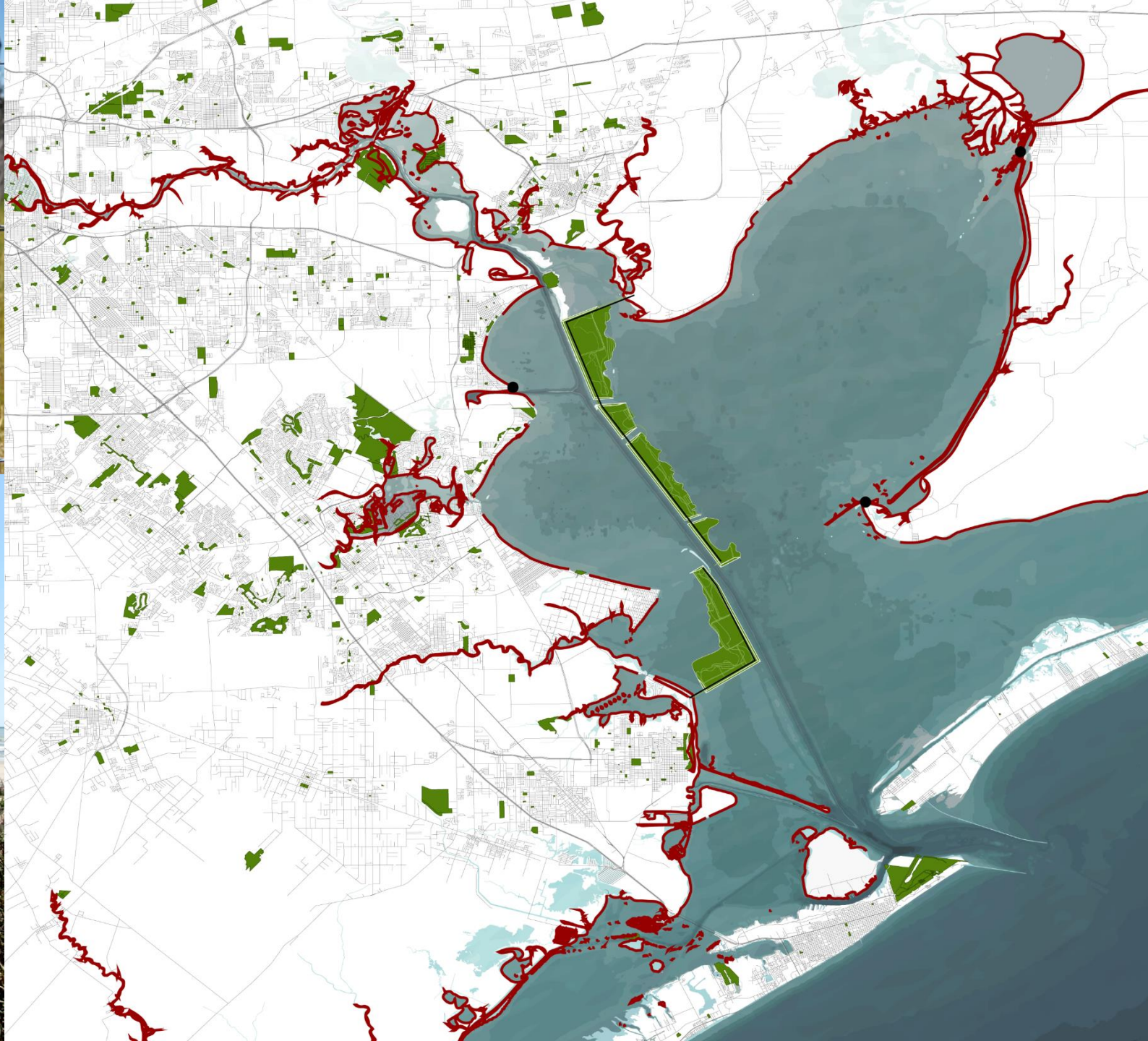


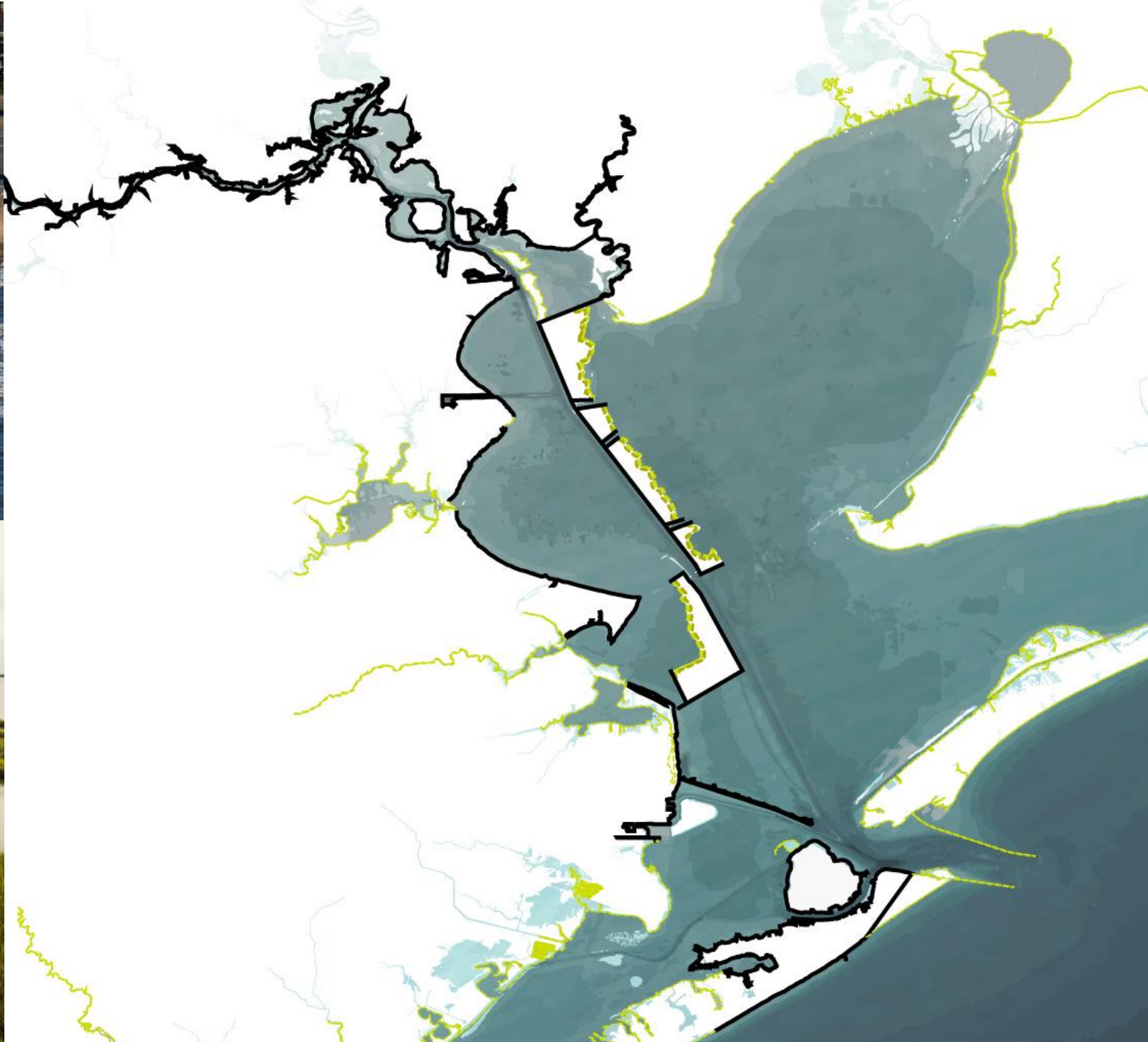
DREDGING

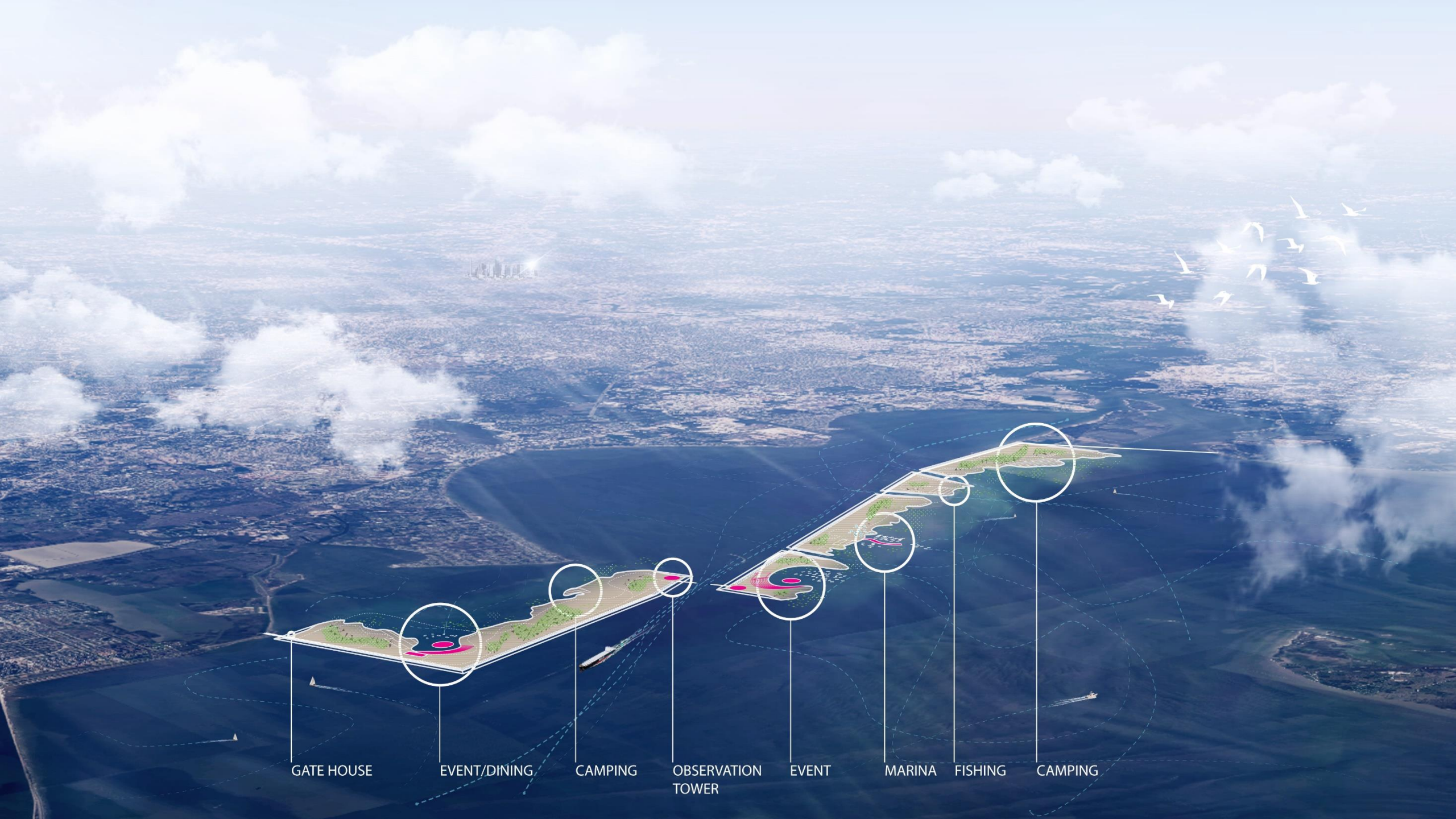
GALVESTON BAY PARK

HOUSTON SHIP CHANNEL WIDENING









GATE HOUSE

EVENT/DINING

CAMPING

OBSERVATION  
TOWER

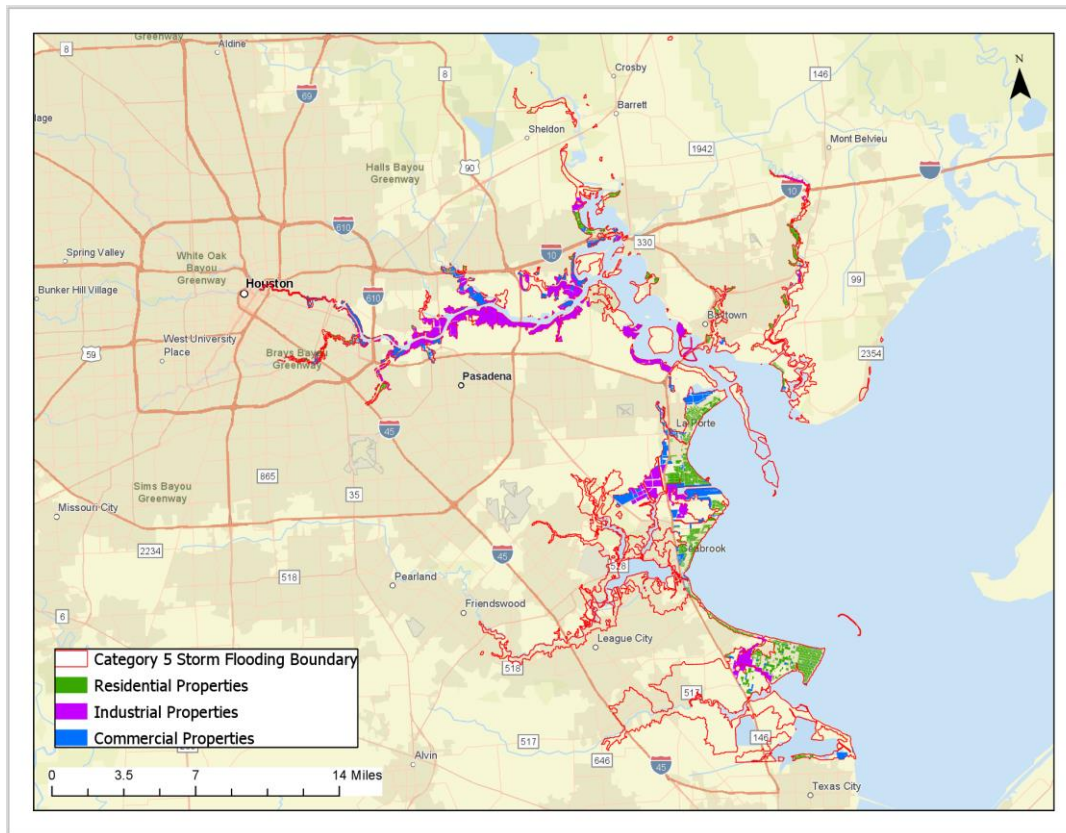
EVENT

MARINA

FISHING

CAMPING

The Weathington report identified over 15,000 properties in Galveston and Harris counties potentially affected by the storm surge resulting from a Category 5 hurricane with the proposed coastal barrier in place



	Residential	Industrial	Commercial
Harris County	8,575	534	1,046
Galveston County	4,698	41	193
Total	13,272	575	1,239

- Modeling was conducted by Clint Dawson at UT Austin, assuming that coastal elements of the barrier were in place, but without the Clear Creek and Dickinson Bayou structures
- Properties affected were defined as listed on county tax rolls, with land use as specified by Galveston County and by review of satellite imagery in Harris County





















